

- 1) 02°53'39" 5937.87' 150.00' 299.94'
- 2) 01°17'40" 4514.10' 50.99' 101.98'
- 3) 01°05'12" 11072.37' 105.00' 209.99'

NANNIE D. KINNEY
DB 64 - 495

Formerly **DANIEL BAKER**
DB 149 - 335

Now or Formerly
WILLIAM A. COOKE,
INC.

DB 149 - 437

48.24 ACRES
DB 96 - 341

LEROY T. CHISHOLM
DB 51 - 196

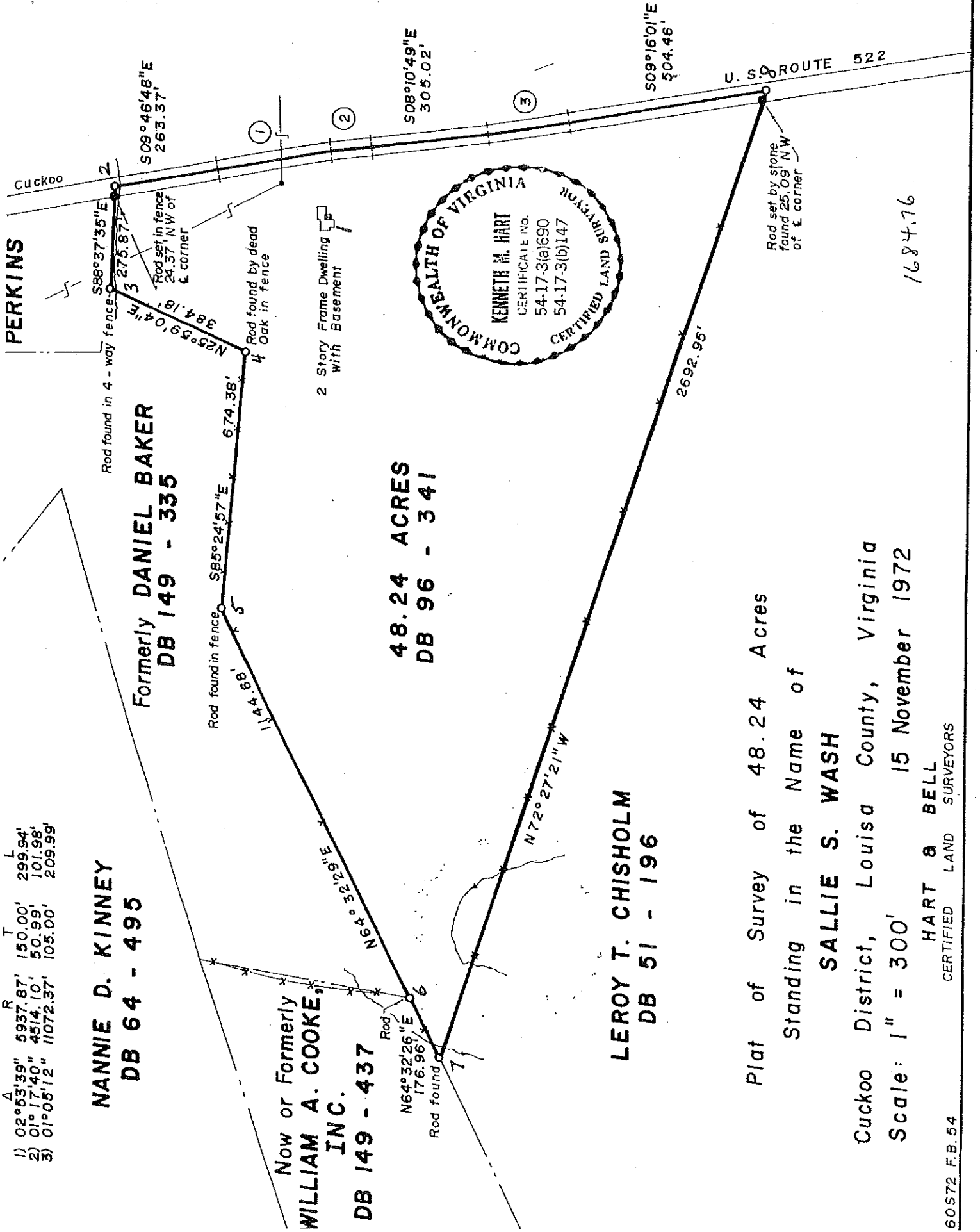
Plat of Survey of 48.24 Acres
Standing in the Name of

SALLIE S. WASH

Cuckoo District, Louisa County, Virginia
Scale: 1" = 300' 15 November 1972

HART & BELL
CERTIFIED LAND SURVEYORS

1684.76



Meridian Per HART & BELL Survey 11 November 1969

ROBERT W. WASH Estate
& SALLIE S. WASH

DB 96 - 341
Plat: DB 15 - 592,
Portion of Lot 1

9.01 ACRES

121.09 Acres -
Residue

WASH

DB 96 - 341
Plat: DB 15 - 592,
Portion of Lot 1

Formerly
HALL

WB 23 -
159

DB 22 -
346

R. LEE & DOROTHY PROFFITT
DB 129 - 84 Plat: DB 129 - 85

SOUTHANNA BAPTIST CHURCH
DB 115 - 93 PB 4 - 60

CHARLES R. CLOUGH
DB 114 - 497 Plat: DB 114 - 498
WB 29 - 485 Plat: DB 96 - 351

JOHN ROBERT CLOUGH
DB 52 - 349
Plat: DB 49 - 329

REFERENCES TO CAPTIONED PROPERTY:
Portion of
DB 96 - 341
Plat: DB 15 - 592, Lot 1
Tax Map Section 82, Parcel 87

Plat of Survey of 9.01 Acres
Surveyed at the Request of

WILLIAM M. WASH

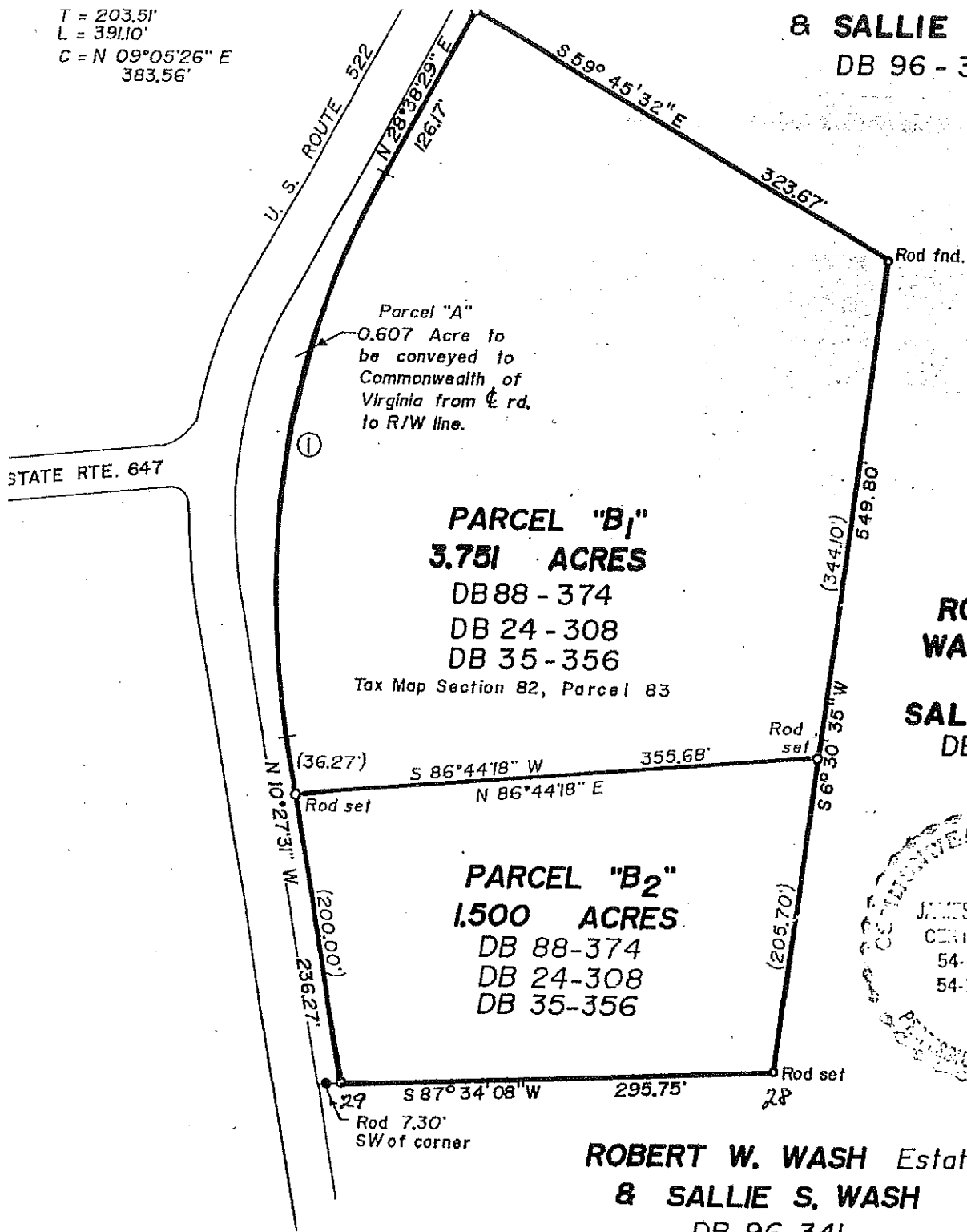
Cuckoo District, Louisa County,
Virginia

Scale: 1" = 330' 18 February 1977

HART & BELL
CERTIFIED LAND SURVEYORS

T = 203.51'
L = 391.10'
C = N 09°05'26" E
383.56'

& SALLIE S. WASH
DB 96 - 341



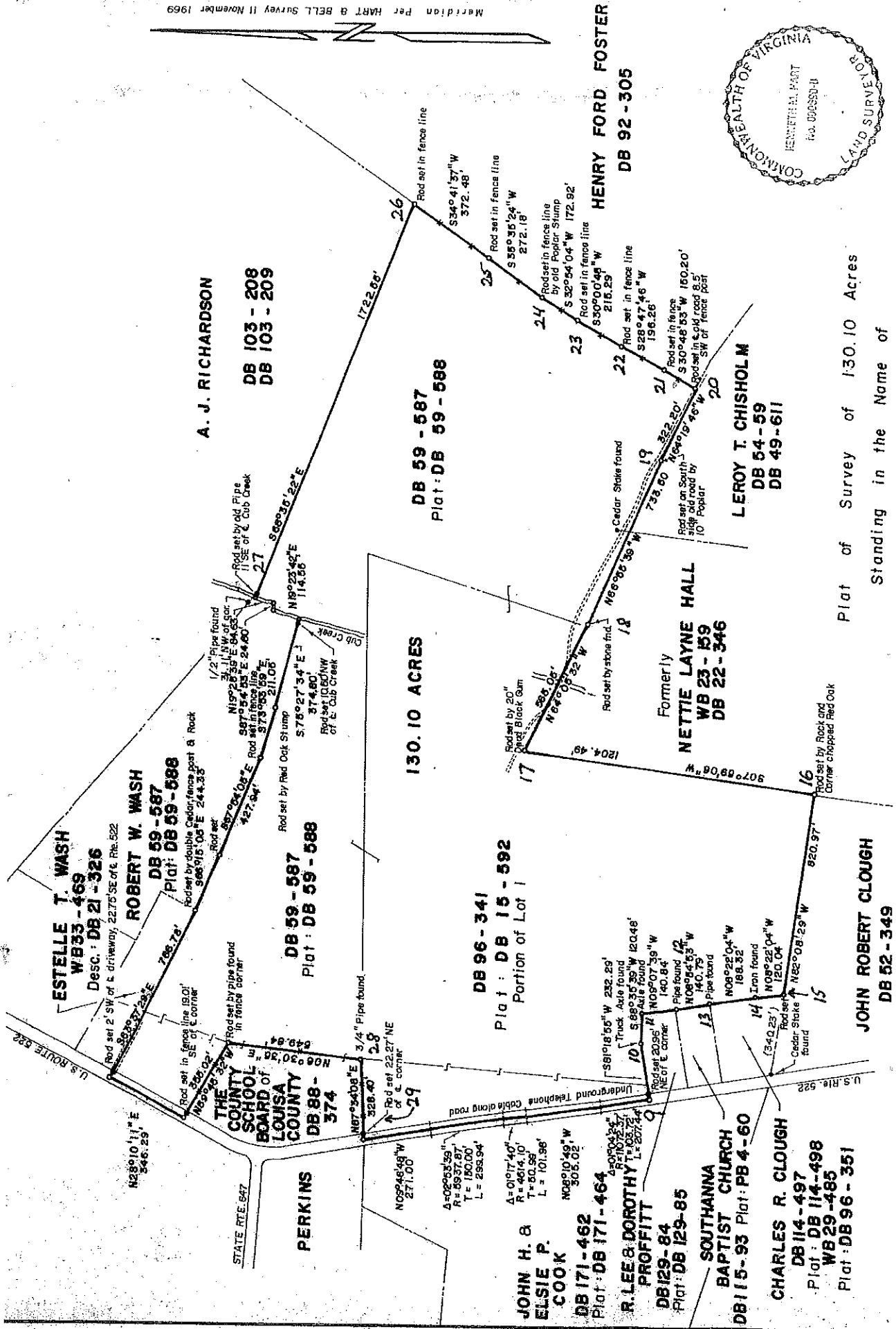
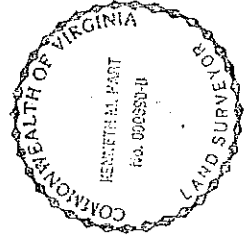
ROBERT W. WASH Estate
&
SALLIE S. WASH
DB 96 - 341



ROBERT W. WASH Estate
& **SALLIE S. WASH**
DB 96-341

Plat of Survey of Parcel "B1" & Parcel "B2"
Containing a Total of 5.251 Acres
Standing in the name of The **COUNTY SCHOOL BOARD** of
LOUISA COUNTY
Cuckoo District, Louisa County, Va.
Scale: 1" = 100' 25 September 1985

JAMES H. BELL, JR., P.C.
PROFESSIONAL LAND SURVEYOR
Mineral, Virginia 23117



ESTELLE T. WASH
WB33-469
DESC. : DB 21-326

ROBERT W. WASH
DB 59-587
Plat: DB 59-588

DB 59-587
Plat : DB 59-588

130.10 ACRES

DB 96-341
Plat : DB 15-592
Portion of Lot 1

JOHN H. & ELSIE P. COOK
DB 171-462
Plat: DB 171-464

R. LEE & DOROTHY PROFFITT
DB 129-84
Plat: DB 129-85

SOUTHANNA BAPTIST CHURCH
DB 115-93 Plat: PB 4-60

CHARLES R. CLOUGH
DB 114-497
Plat: DB 114-498
WB 29-465
Plat: DB 96-351

JOHN ROBERT CLOUGH
DB 52-349

NETTIE LAYNE HALL
WB 23-159
DB 22-346

LEROY T. CHISHOLM
DB 54-59
DB 49-611

DB 59-587
Plat: DB 59-588

A. J. RICHARDSON
DB 103-208
DB 103-209

HENRY FORD FOSTER
DB 92-305

Plat of Survey of 130.10 Acres
Standing in the Name of